

Test Report

No. CANEC0805939401

Date: 05 Nov 2008

Page 1 of 9

SHENZHEN ARCHWAY ELECTRIC CO.,LTD
GONGXIAOSHE INDUSTRIAL ZONE,WEST JIANSHE ROAD,GONGMING TOWN BAO'AN
DISTRICT,SHENZHEN
CHINA

The following sample(s) was/were submitted and identified on behalf of the clients as :

纤维套管

SGS Job No. : 11389382 - SZ
Date of Sample Received : 29 Oct 2008
Testing Period : 29 Oct 2008 - 04 Nov 2008
Test Requested : Selected test(s) as requested by client.
Test Method : Please refer to next page(s).
Test Results : Please refer to next page(s).
Conclusion : A: Based on the performed tests on submitted sample(s), the results **comply with** the RoHS Directive 2002/95/EC and its subsequent amendments.

Signed for and on behalf of
SGS-CSTC Ltd.



Huang Fang, Sunny
Sr. Engineer

This document is issued by the Company under its General Conditions of Service printed overleaf or available on request and accessible at http://www.sgs.com/terms_and_conditions.htm. Attention is drawn to the limitation of liability, indemnification and jurisdiction issues defined therein. Any holder of this document is advised that information contained hereon reflects the Company's findings at the time of its intervention only and within the limits of Client's instructions, if any. The Company's sole responsibility is to its Client and this document does not exonerate parties to a transaction from exercising all their rights and obligations under the transaction documents. Any unauthorized alteration, forgery or falsification of the content or appearance of this document is unlawful and offenders may be prosecuted to the fullest extent of the law. Unless otherwise stated the results shown in this test report refer only to the sample(s) tested. This document cannot be reproduced except in full, without prior approval of the Company.

Test Report

No. CANEC0805939401

Date: 05 Nov 2008

Page 2 of 9

Test Results:

ID for specimen 1 : CAN08-059394.001
 Description for specimen 1 : White tube

A: RoHS Directive 2002/95/EC

Test Item(s)	Unit	Test Method (Reference)	Result	MDL	Limit
Cadmium (Cd)	mg/kg	IEC 62321/2nd CDV (111/95/CDV), ICP-OES	N.D.	2	100
Lead (Pb)	mg/kg	IEC 62321/2nd CDV (111/95/CDV), ICP-OES	19	2	1000
Mercury (Hg)	mg/kg	IEC 62321/2nd CDV (111/95/CDV), ICP-OES	N.D.	2	1000
Hexavalent Chromium (CrVI) by alkaline extraction	mg/kg	IEC 62321/2nd CDV (111/95/CDV), UV-Vis	N.D.	2	1000
Sum of PBBs	mg/kg	-	N.D.	-	1000
Monobromobiphenyl	mg/kg	IEC 62321/2nd CDV (111/95/CDV), GC-MS	N.D.	5	
Dibromobiphenyl	mg/kg	IEC 62321/2nd CDV (111/95/CDV), GC-MS	N.D.	5	
Tribromobiphenyl	mg/kg	IEC 62321/2nd CDV (111/95/CDV), GC-MS	N.D.	5	
Tetrabromobiphenyl	mg/kg	IEC 62321/2nd CDV (111/95/CDV), GC-MS	N.D.	5	
Pentabromobiphenyl	mg/kg	IEC 62321/2nd CDV (111/95/CDV), GC-MS	N.D.	5	
Hexabromobiphenyl	mg/kg	IEC 62321/2nd CDV (111/95/CDV), GC-MS	N.D.	5	
Heptabromobiphenyl	mg/kg	IEC 62321/2nd CDV (111/95/CDV), GC-MS	N.D.	5	
Octabromobiphenyl	mg/kg	IEC 62321/2nd CDV (111/95/CDV), GC-MS	N.D.	5	
Nonabromobiphenyl	mg/kg	IEC 62321/2nd CDV (111/95/CDV), GC-MS	N.D.	5	
Decabromobiphenyl	mg/kg	IEC 62321/2nd CDV (111/95/CDV), GC-MS	N.D.	5	
Sum of PBDEs	mg/kg	-	N.D.	-	1000
Monobromodiphenyl ether	mg/kg	IEC 62321/2nd CDV (111/95/CDV), GC-MS	N.D.	5	
Dibromodiphenyl ether	mg/kg	IEC 62321/2nd CDV (111/95/CDV), GC-MS	N.D.	5	
Tribromodiphenyl ether	mg/kg	IEC 62321/2nd CDV (111/95/CDV), GC-MS	N.D.	5	
Tetrabromodiphenyl ether	mg/kg	IEC 62321/2nd CDV (111/95/CDV), GC-MS	N.D.	5	
Pentabromodiphenyl ether	mg/kg	IEC 62321/2nd CDV (111/95/CDV), GC-MS	N.D.	5	
Hexabromodiphenyl ether	mg/kg	IEC 62321/2nd CDV (111/95/CDV), GC-MS	N.D.	5	
Heptabromodiphenyl ether	mg/kg	IEC 62321/2nd CDV (111/95/CDV), GC-MS	N.D.	5	
Octabromodiphenyl ether	mg/kg	IEC 62321/2nd CDV (111/95/CDV), GC-MS	N.D.	5	
Nonabromodiphenyl ether	mg/kg	IEC 62321/2nd CDV (111/95/CDV), GC-MS	N.D.	5	
Decabromodiphenyl ether ##	mg/kg	IEC 62321/2nd CDV (111/95/CDV), GC-MS	N.D.	5	

Note:

1. mg/kg = ppm
2. N.D. = Not Detected (< MDL)
3. MDL = Method Detection Limit
4. ## = The exemption of DecaBDE in polymeric application according 2005/717/EC was overruled by the European Court of Justice by its decision of 01.04.2008. Subsequently DecaBDE will be included in the sum of PBDE after 01.07.2008
5. "-" = Not regulated

This document is issued by the Company under its General Conditions of Service printed overleaf or available on request and accessible at http://www.sgs.com/terms_and_conditions.htm. Attention is drawn to the limitation of liability, indemnification and jurisdiction issues defined therein. Any holder of this document is advised that information contained hereon reflects the Company's findings at the time of its intervention only and within the limits of Client's instructions, if any. The Company's sole responsibility is to its Client and this document does not exonerate parties to a transaction from exercising all their rights and obligations under the transaction documents. Any unauthorized alteration, forgery or falsification of the content or appearance of this document is unlawful and offenders may be prosecuted to the fullest extent of the law. Unless otherwise stated the results shown in this test report refer only to the sample(s) tested. This document cannot be reproduced except in full, without prior approval of the Company.

Test Report

No. CANEC0805939401

Date: 05 Nov 2008

Page 3 of 9

B: Phthalate(s)

Test Item(s)	Unit	Test Method (Reference)	Result	MDL
Dimethyl Phthalate (DMP)	% (w/w)	EN14372: 2004, GC-MS	N.D.	0.005
Diethyl Phthalate (DEP)	% (w/w)	EN14372: 2004, GC-MS	N.D.	0.005
Dibutyl Phthalate (DBP)	% (w/w)	EN14372: 2004, GC-MS	N.D.	0.003
Benzylbutyl Phthalate (BBP)	% (w/w)	EN14372: 2004, GC-MS	N.D.	0.003
Di-(2-ethylhexyl) Phthalate (DEHP)	% (w/w)	EN14372: 2004, GC-MS	N.D.	0.003
Diisononyl Phthalate (DINP)	% (w/w)	EN14372: 2004, GC-MS	N.D.	0.01
Di-n-octyl Phthalate (DNOP)	% (w/w)	EN14372: 2004, GC-MS	N.D.	0.003
Diisodecyl Phthalate (DIDP)	% (w/w)	EN14372: 2004, GC-MS	N.D.	0.01
Diiso butyl Phthalate (DIBP)	% (w/w)	EN14372: 2004, GC-MS	N.D.	0.005
Dinonyl Phthalate (DNP)	% (w/w)	EN14372: 2004, GC-MS	N.D.	0.005
Diisooctyl Phthalate (DIOP)	% (w/w)	EN14372: 2004, GC-MS	N.D.	0.01
Dipropyl Phthalate (DPPrP)	% (w/w)	EN14372: 2004, GC-MS	N.D.	0.005
Dicyclohexyl Phthalate (DCHP)	% (w/w)	EN14372: 2004, GC-MS	N.D.	0.005
Dipentyl Phthalate (DPP)	% (w/w)	EN14372: 2004, GC-MS	N.D.	0.005
Dibenzyl Phthalate (DBzP)	% (w/w)	EN14372: 2004, GC-MS	N.D.	0.005
Diphenyl Phthalate (DPhP)	% (w/w)	EN14372: 2004, GC-MS	N.D.	0.005

Note :

1. mg/kg = ppm; 0.1% = 1000ppm
2. N.D. = Not detected (< MDL)
3. MDL = Method Detection Limit

For reference: According to EU Directive 2005/84/EC,

(1) The phthalates DEHP, DBP, BBP shall not be used as substances or as constituents of preparation, at concentrations of greater than 0.1% by mass of plasticized material, in toys and childcare articles.

(2) The phthalates DINP, DIDP, DNOP shall not be used as substances or as constituents of preparations, at concentrations of greater than 0.1% by mass of the plasticized materials, in toys and childcare articles which can be placed in the mouth by children.

C: PAHs (Polynuclear Aromatic Hydrocarbons)

Test Item(s)	Unit	Test Method	Result	MDL
Naphthalene	mg/kg	ZEK 01.1-08, GC-MS	N.D.	0.2
Acenaphthylene	mg/kg	ZEK 01.1-08, GC-MS	N.D.	0.2
Acenaphthene	mg/kg	ZEK 01.1-08, GC-MS	N.D.	0.2
Fluorene	mg/kg	ZEK 01.1-08, GC-MS	N.D.	0.2
Phenanthrene	mg/kg	ZEK 01.1-08, GC-MS	N.D.	0.2
Anthracene	mg/kg	ZEK 01.1-08, GC-MS	N.D.	0.2
Fluoranthene	mg/kg	ZEK 01.1-08, GC-MS	N.D.	0.2
Pyrene	mg/kg	ZEK 01.1-08, GC-MS	N.D.	0.2
Benz(a)anthracene	mg/kg	ZEK 01.1-08, GC-MS	N.D.	0.2

This document is issued by the Company under its General Conditions of Service printed overleaf or available on request and accessible at http://www.sgs.com/terms_and_conditions.htm. Attention is drawn to the limitation of liability, indemnification and jurisdiction issues defined therein. Any holder of this document is advised that information contained hereon reflects the Company's findings at the time of its intervention only and within the limits of Client's instructions, if any. The Company's sole responsibility is to its Client and this document does not exonerate parties to a transaction from exercising all their rights and obligations under the transaction documents. Any unauthorized alteration, forgery or falsification of the content or appearance of this document is unlawful and offenders may be prosecuted to the fullest extent of the law.

Unless otherwise stated the results shown in this test report refer only to the sample(s) tested. This document cannot be reproduced except in full, without prior approval of the Company.

Test Report

No. CANEC0805939401

Date: 05 Nov 2008

Page 4 of 9

Test Item(s)	Unit	Test Method	Result	MDL
Chrysene	mg/kg	ZEK 01.1-08, GC-MS	N.D.	0.2
Benzo(b)fluoranthene	mg/kg	ZEK 01.1-08, GC-MS	N.D.	0.2
Benzo(k)fluoranthene	mg/kg	ZEK 01.1-08, GC-MS	N.D.	0.2
Benzo(a)pyrene	mg/kg	ZEK 01.1-08, GC-MS	N.D.	0.2
Indeno(1,2,3-cd)pyrene	mg/kg	ZEK 01.1-08, GC-MS	N.D.	0.2
Dibenzo(a,h)anthracene	mg/kg	ZEK 01.1-08, GC-MS	N.D.	0.2
Benzo(g,h,i)perylene	mg/kg	ZEK 01.1-08, GC-MS	N.D.	0.2
Sum of 16 PAHs acc. US EPA	mg/kg	-	N.D.	-

Note:

1. mg/kg = ppm
2. N.D. = Not Detected (< MDL)
3. MDL = Method Detection Limit

ZEK 01.1-08 : Restraining maximum values for products

Parameter	Category 1 Materials which are meant to put in the mouth as well as toys for children <36 months	Category 2 Materials with foreseeable skin contact >30 s (prolonged skin contact) and toys not covered by category 1	Category 3 Materials with foreseeable skin contact ≤30 s (short time skin contact) or without skin contact
Benzo[a]pyrene (mg/kg)	<MDL (<0.2)***	1	20
Sum 16 PAH (US EPA) (mg/kg)**	<MDL (<0.2)***	10	200

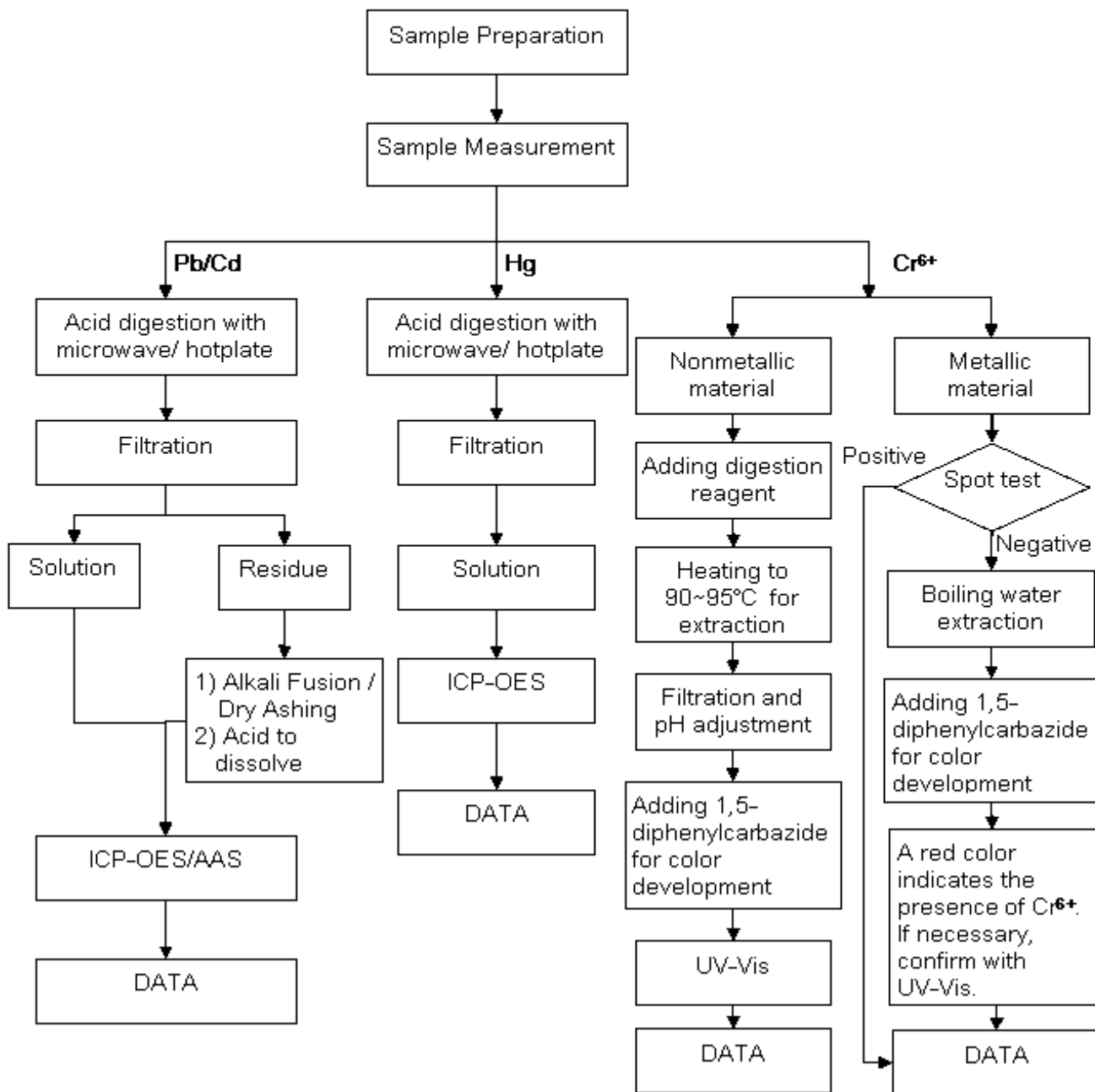
Remark : ** = Only PAH substances >0.2 mg/kg are taken into account while calculating the sum of PAHs
 *** = In case that the maximum values exceed the limits of category 1, but are within the limits of category 2, one may confirm the suitability of the tested material which is in contact with oral mucosa by additional specific migration tests of PAH components based on DIN EN 1186ff and §64 LFGB 80.30-1. The conclusion of the migration test results must be made based on food law criteria.

This document is issued by the Company under its General Conditions of Service printed overleaf or available on request and accessible at http://www.sgs.com/terms_and_conditions.htm. Attention is drawn to the limitation of liability, indemnification and jurisdiction issues defined therein. Any holder of this document is advised that information contained hereon reflects the Company's findings at the time of its intervention only and within the limits of Client's instructions, if any. The Company's sole responsibility is to its Client and this document does not exonerate parties to a transaction from exercising all their rights and obligations under the transaction documents. Any unauthorized alteration, forgery or falsification of the content or appearance of this document is unlawful and offenders may be prosecuted to the fullest extent of the law. Unless otherwise stated the results shown in this test report refer only to the sample(s) tested. This document cannot be reproduced except in full, without prior approval of the Company.

ATTACHMENTS

Testing Flow Chart

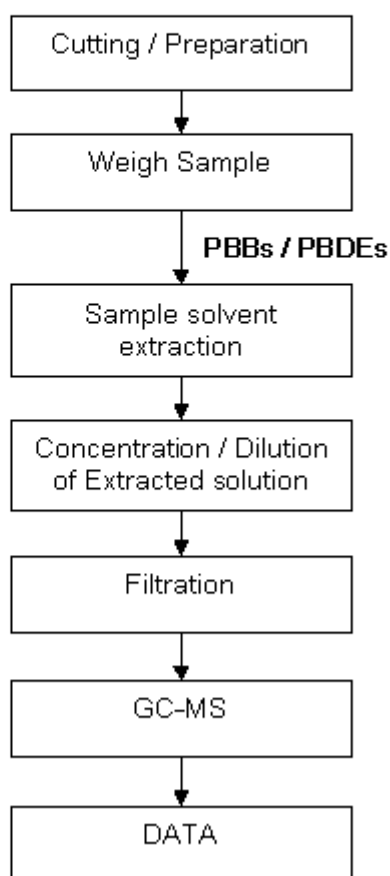
- 1) Name of the person who made measurement: Bowen Chen
- 2) Name of the person in charge of measurement: Adams Yu
- 3) These samples were dissolved totally by pre-conditioning method according to below flow chart (Cr⁶⁺ test method excluded).



This document is issued by the Company under its General Conditions of Service printed overleaf or available on request and accessible at http://www.sgs.com/terms_and_conditions.htm. Attention is drawn to the limitation of liability, indemnification and jurisdiction issues defined therein. Any holder of this document is advised that information contained hereon reflects the Company's findings at the time of its intervention only and within the limits of Client's instructions, if any. The Company's sole responsibility is to its Client and this document does not exonerate parties to a transaction from exercising all their rights and obligations under the transaction documents. Any unauthorized alteration, forgery or falsification of the content or appearance of this document is unlawful and offenders may be prosecuted to the fullest extent of the law. Unless otherwise stated the results shown in this test report refer only to the sample(s) tested. This document cannot be reproduced except in full, without prior approval of the Company.

Testing Flow Chart

- 1) Name of the person who made measurement: Lina Tang
- 2) Name of the person in charge of measurement: Tina Zhao

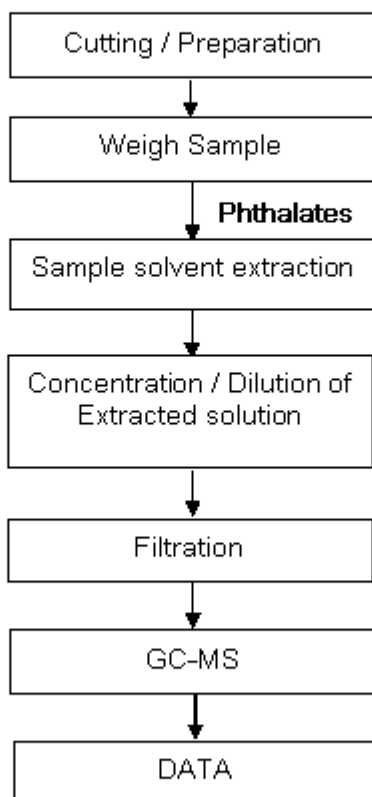


This document is issued by the Company under its General Conditions of Service printed overleaf or available on request and accessible at http://www.sgs.com/terms_and_conditions.htm. Attention is drawn to the limitation of liability, indemnification and jurisdiction issues defined therein. Any holder of this document is advised that information contained hereon reflects the Company's findings at the time of its intervention only and within the limits of Client's instructions, if any. The Company's sole responsibility is to its Client and this document does not exonerate parties to a transaction from exercising all their rights and obligations under the transaction documents. Any unauthorized alteration, forgery or falsification of the content or appearance of this document is unlawful and offenders may be prosecuted to the fullest extent of the law. Unless otherwise stated the results shown in this test report refer only to the sample(s) tested. This document cannot be reproduced except in full, without prior approval of the Company.

ATTACHMENTS

Testing Flow Chart

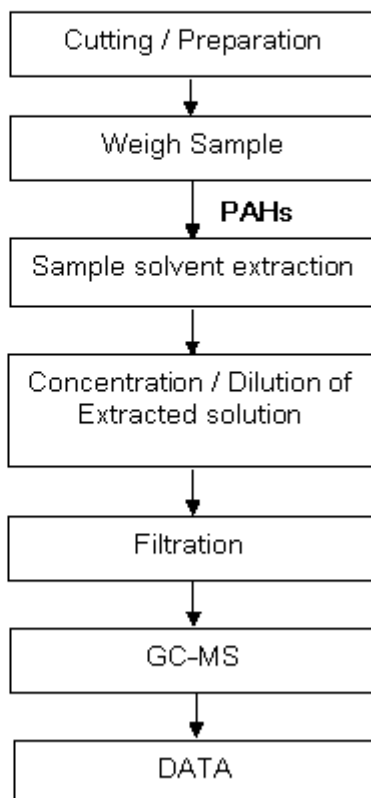
- 1) Name of the person who made measurement: Yimin Fang
- 2) Name of the person in charge of measurement: Tina Zhao



This document is issued by the Company under its General Conditions of Service printed overleaf or available on request and accessible at http://www.sgs.com/terms_and_conditions.htm. Attention is drawn to the limitation of liability, indemnification and jurisdiction issues defined therein. Any holder of this document is advised that information contained hereon reflects the Company's findings at the time of its intervention only and within the limits of Client's instructions, if any. The Company's sole responsibility is to its Client and this document does not exonerate parties to a transaction from exercising all their rights and obligations under the transaction documents. Any unauthorized alteration, forgery or falsification of the content or appearance of this document is unlawful and offenders may be prosecuted to the fullest extent of the law. Unless otherwise stated the results shown in this test report refer only to the sample(s) tested. This document cannot be reproduced except in full, without prior approval of the Company.

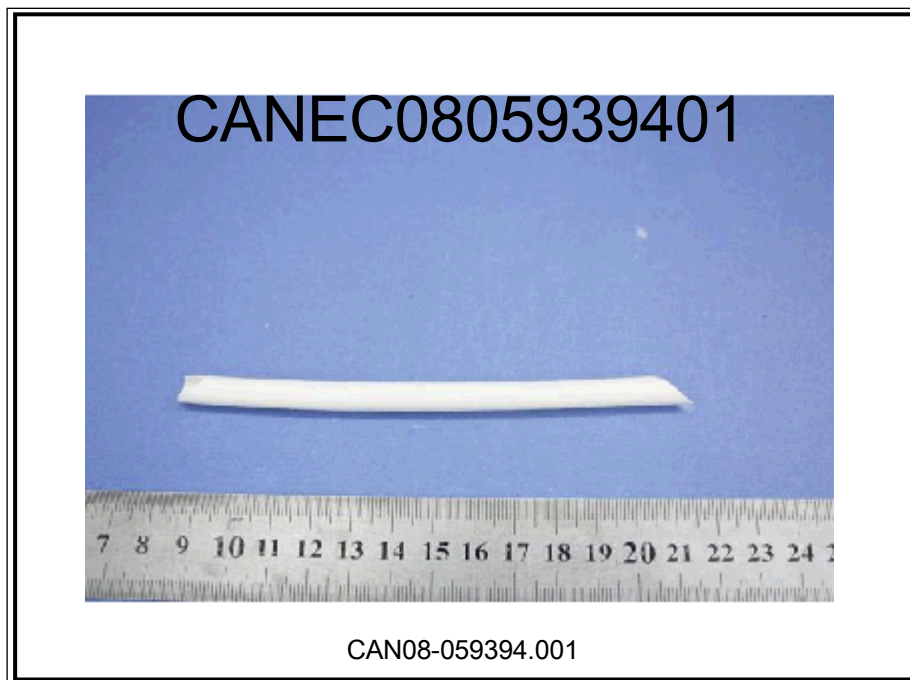
Testing Flow Chart

- 1) Name of the person who made measurement: Lina Tang
- 2) Name of the person in charge of measurement: Tina Zhao



This document is issued by the Company under its General Conditions of Service printed overleaf or available on request and accessible at http://www.sgs.com/terms_and_conditions.htm. Attention is drawn to the limitation of liability, indemnification and jurisdiction issues defined therein. Any holder of this document is advised that information contained hereon reflects the Company's findings at the time of its intervention only and within the limits of Client's instructions, if any. The Company's sole responsibility is to its Client and this document does not exonerate parties to a transaction from exercising all their rights and obligations under the transaction documents. Any unauthorized alteration, forgery or falsification of the content or appearance of this document is unlawful and offenders may be prosecuted to the fullest extent of the law. Unless otherwise stated the results shown in this test report refer only to the sample(s) tested. This document cannot be reproduced except in full, without prior approval of the Company.

Sample photo:



SGS authenticate the photo on original report only

*** End of Report ***

This document is issued by the Company under its General Conditions of Service printed overleaf or available on request and accessible at http://www.sgs.com/terms_and_conditions.htm. Attention is drawn to the limitation of liability, indemnification and jurisdiction issues defined therein. Any holder of this document is advised that information contained hereon reflects the Company's findings at the time of its intervention only and within the limits of Client's instructions, if any. The Company's sole responsibility is to its Client and this document does not exonerate parties to a transaction from exercising all their rights and obligations under the transaction documents. Any unauthorized alteration, forgery or falsification of the content or appearance of this document is unlawful and offenders may be prosecuted to the fullest extent of the law. Unless otherwise stated the results shown in this test report refer only to the sample(s) tested. This document cannot be reproduced except in full, without prior approval of the Company.